

# House Talk

*Style doesn't have to be defined when the character is carefully crafted.*

Sometimes the design of a beautiful home begins with the ability to spread out over a large piece of property with many options for layout at your fingertips. Sometimes it begins with one strong view that the homeowner wants to see from all main spaces in the house. And sometimes, a truly great home begins with severe site constraints that completely dictate where each square foot of the house can sit on the site. The latter is the story of this fine home.

that with creativity and determination, liabilities can become assets.

The homeowners, Pat & Toni Widing and their kids, Luke & Corina, are creative people who came with a storehouse of great ideas. When I stand in their home, I can stand in one spot for a long period of time and never look at the same thing twice. There are so many beautiful and intriguing ideas that my eye wanders

## project sketchbook



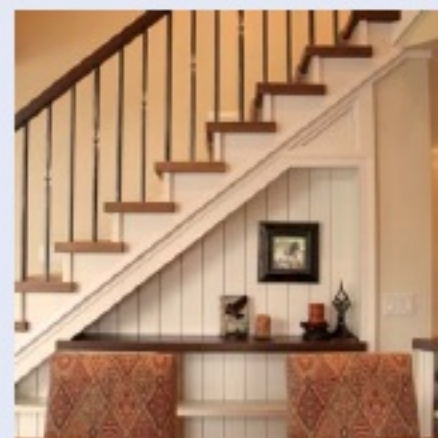
Lake Elevation



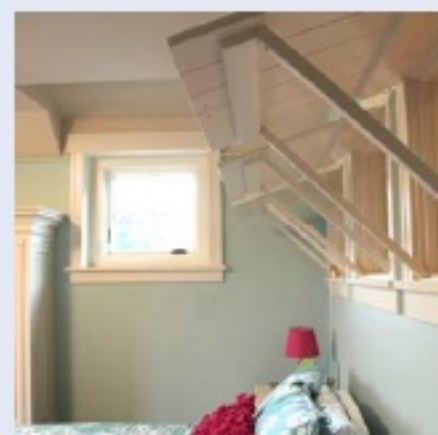
Photo by Adam Cooke

With a high water table, wetlands, and a limited building envelope, concessions had to be made up front in order to proceed with initial design sketches. The luxury of a walkout basement, or even a finished lower level, had to be abandoned because of the high water table, but the "walkable" crawlspace that resulted has become valuable storage space for the homeowners. The wetlands dictated the placement of the driveway, and the result is an inviting approach to the home that allows visitors to capture a full view of the lake as they park their cars. The limited building envelope led to an exciting design with lots of movement and interest in the floor plan. It is clear to see in this home

around endlessly, trying to take it all in. The Widings' goal was that their home would be a collection of appealing experiences that could not be labeled by one style. Rustic beams and columns that appear to be driftwood that just floated to shore, were hand-distressed by Pat, and on them are hidden messages and images that are precious and meaningful to the family. I find myself constantly entertaining my curiosity by searching for a mark that might have been purposely placed rather than randomly struck by a hammer or a chisel. (continued on page 4)



Dining Room



Daughter's Room



Sun Room

## Time continued...

Funny, He didn't say "yes" nor did he say "no" but God gave me the outcome and then let me decide. I also realized that losing them for one year could take 10 years to heal. The cost was too great, so rather than building our dream home, we moved into someone else's dream home. Indeed, it was time to move the family to another home, just not one that we designed and built ourselves. It taught us that just because we can do something doesn't mean we should. Conversely, when we should do it, then we can.

The next story happened about 3 years ago during an unlikely time to build, when the realty and construction market took a very sharp decline. The home we had moved into desperately needed new landscaping but I didn't want to take from our savings to pay for it. Once again, I prayed for direction. It was revealed that the landscaping needed to happen but I was treating my savings too sacredly. I tried to play it financially safe and started to do a lot of the work myself. Everything went wrong with this approach because I missed the point. It was time to do the landscaping but it wasn't for me to do because I needed to pay someone to do it. A couple of issues back we discussed **PRICE** and how making it the most important priority will cloud our vision. We can plan all we want, but only God knows the correct timing and the outcome. In the next issue we will wrap up this series with **PEOPLE**...the reason the whole process begins.

# House Talk continued

Set into a cove that is surrounded by this rustic woodwork are beautiful and refined cabinets and furniture pieces—a combination of styles that, in theory, should not work, but in reality is very appealing to my eyes. I'm still standing in the kitchen, and I turn around to see the double islands and magnificent views of the lake, and I can't shake the feeling that I must cook something—now! The scale of the space is so comfortable and inviting that I can envision myself baking and preparing meals tirelessly for hours on end. And yet, I turn to the dining area and living room with their warm tones of wood and comfortable seating (not to mention the impressive stone fireplace), and I know that it's

also easy to relax and unwind in this home.

Outside, with an expertly designed and installed landscape, there are a series of outdoor rooms that continue the theme of, well...no theme! Each space offers a completely different, yet equally enticing, experience. From the covered pergola with plush seating to the sandy beach, and from the grilling patio to the rocky "cliffs" that children love to conquer, endless options for relaxation and entertainment are readily available. When it comes down to the bottom line, it's a family that makes a home. And this family has made this home truly spectacular. by Janice Macklin

**Builder & Owner: Patrick Widing Custom Homes—810.750.8855**

**Landscape Designer: Creative Scapes—810.610.8985**

**Landscape Contractor: Outdoor Living—248.875.9161**



## What we do ...

*Founded in 2001, Christopher Macklin Design, is a residential design firm that specializes in the design of fine new homes, renovations and additions. Our focus is to provide each client with creative and personal solutions for their unique needs. Each client is distinct; therefore each project should reflect this by being one of a kind. Throughout the design process, we work to polish our client's dreams and ambitions to arrive at a functional and aesthetically pleasing home.*

### Design Services

- New Homes
- Remodels & Additions
- Facade Renovations
- Feasibility Studies
- Existing Conditions Analysis
- Inclusive Design
- Interior Design
- Renderings (Concept & Character Drawings)

### Scope of Services

- Pre-Design & Planning
- Preliminary Design
- Zoning Board Submittals
- Schematic Design w/ Cost Estimate
- Construction Documents
- Bidding & Negotiating
- Construction Observation
- Project Management



12940 OLD FARM COURT  
HARTLAND, MI 48353



810.714.0000



MACKLINDSIGN.COM  
(UNDER CONSTRUCTION)



CHRIS@MACKLINDSIGN.COM



4